



# Science Blog



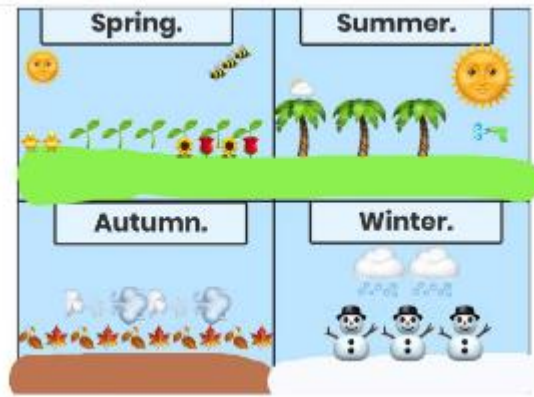
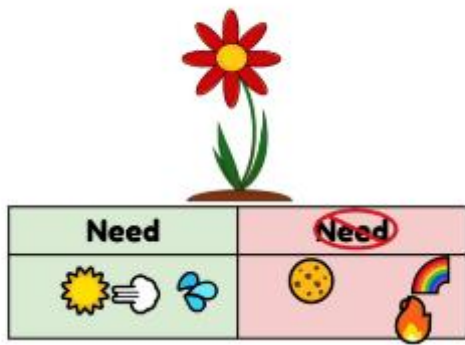
## Science Home-Learning

Dean Field set a variety of home learning tasks to support all areas of the curriculum. During the lockdown we were able to continue to do this via Seesaw communication and task setting and by sending out and delivering paper work packs. We also shared any other home learning ideas sent in from our children and parents via our weekly video or newsletter to encourage fun and engaging ways to continue learning Science at home. Here is a selection from Nursery - Year 6 of how we support Science at home as well as in school.



EYFS have been very busy sharing science experiments, finding bugs in their habitats and finding plants in their gardens.

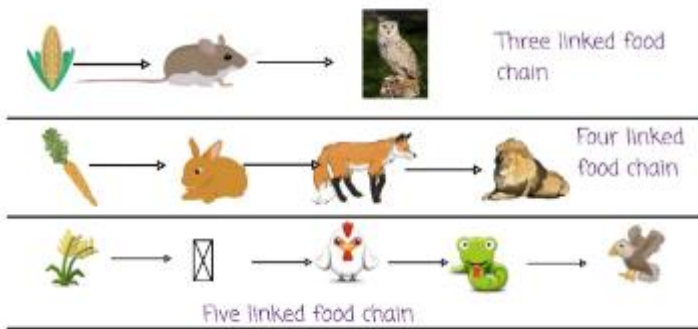




KS1 have been completing lots of activities on Seesaw set by their



In response to: Identifying Habitats



Use these items

**Gone Astray** Activity Sheet EducationCity

Name: \_\_\_\_\_ Class: \_\_\_\_\_

(These animals do not belong to their habitats. One has been done for you.)

|      |         |           |     |     |
|------|---------|-----------|-----|-----|
| crab | dolphin | bullfinch | cod | fox |
|------|---------|-----------|-----|-----|

sea

garden pond hedge and woodland

|           |             |           |             |          |
|-----------|-------------|-----------|-------------|----------|
| butterfly | common frog | earthworm | water shrew | squirrel |
|-----------|-------------|-----------|-------------|----------|

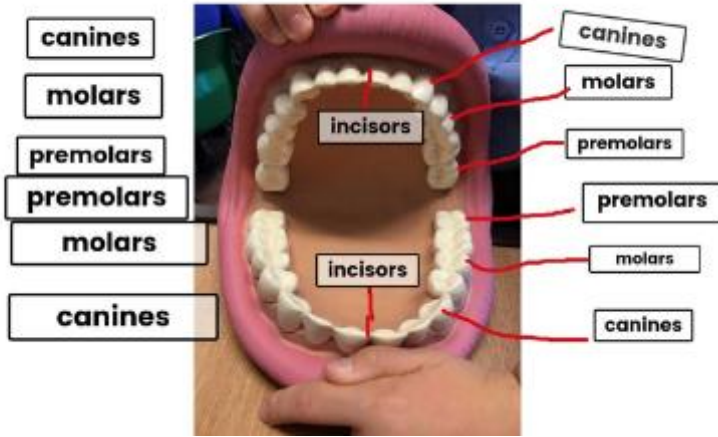
(Circle the words below that could be habitats. One has been done for you.)

garden shoe beach balloon

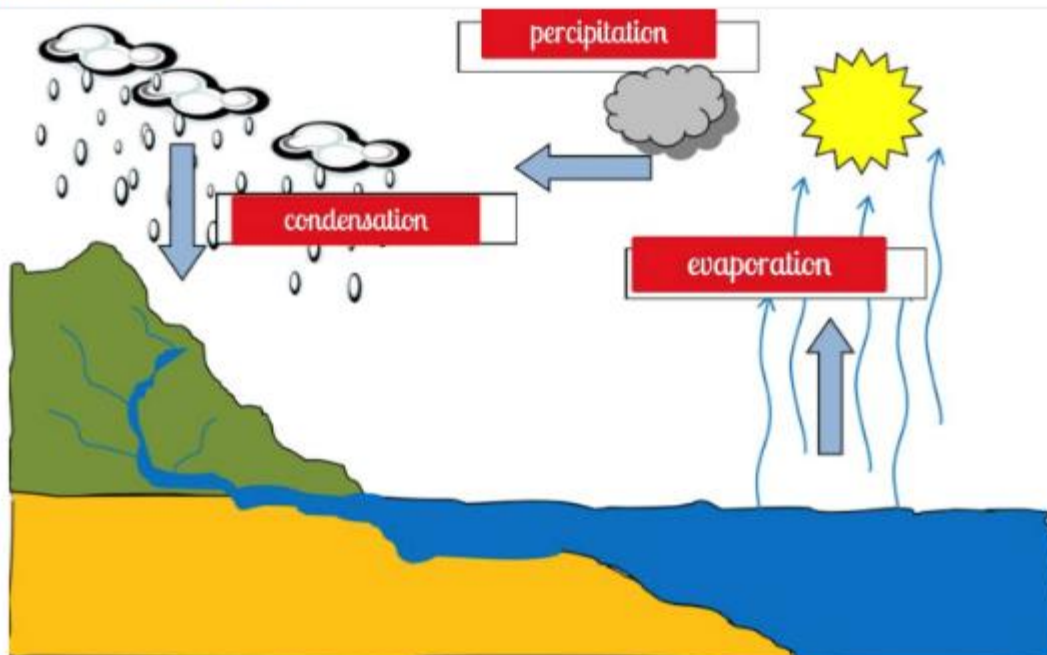
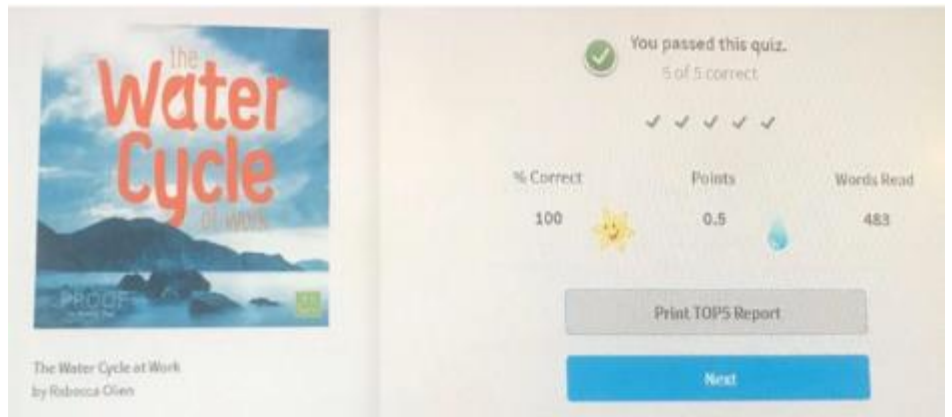
cupboard deep ocean marsh

soil television hedgerow river tree



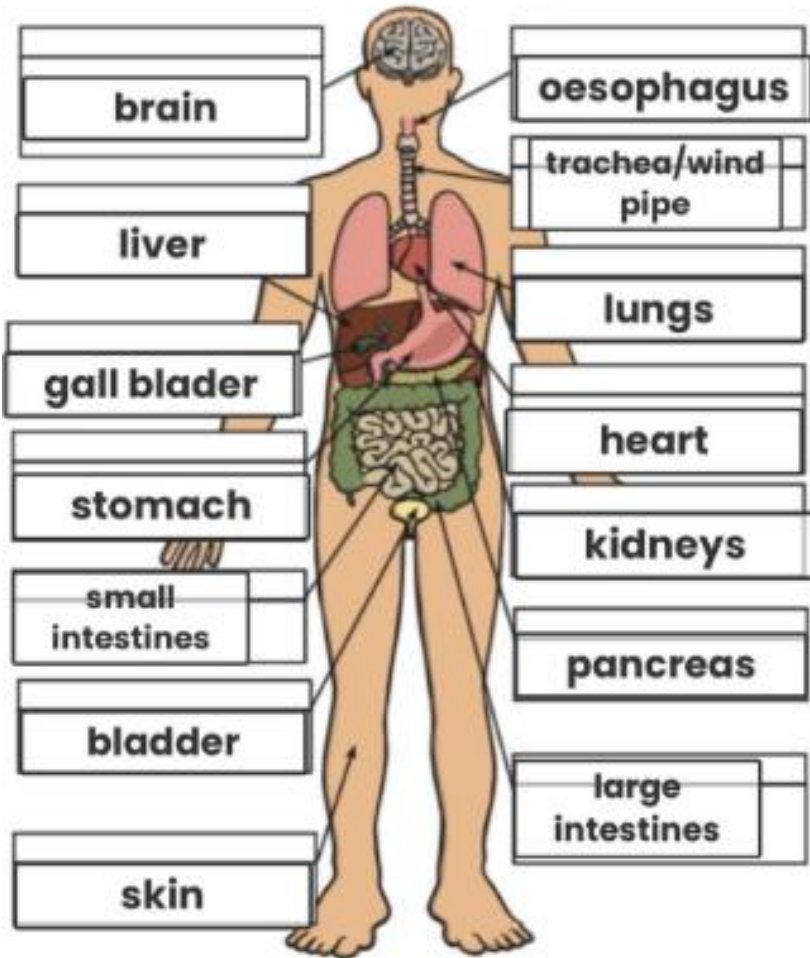


LKS2 have been completing lots of activities on Seesaw set by their teachers including comprehensions and books set on accelerated reader.



## Evolution Reading Comprehension

Cut out the organ names and descriptions and stick them down in the correct boxes on the diagram.



### Sheet A

1) When was Charles Darwin born?

1809

2) What does the word 'naturalist' mean?

Someone who studies animals and plants.

3) What was Darwin interested in?

Samples of animals, plants and rocks.

4) What was the name of the ship that Darwin travelled on?

The Beagle.

5) What does the word 'specimen' mean?

A Sample

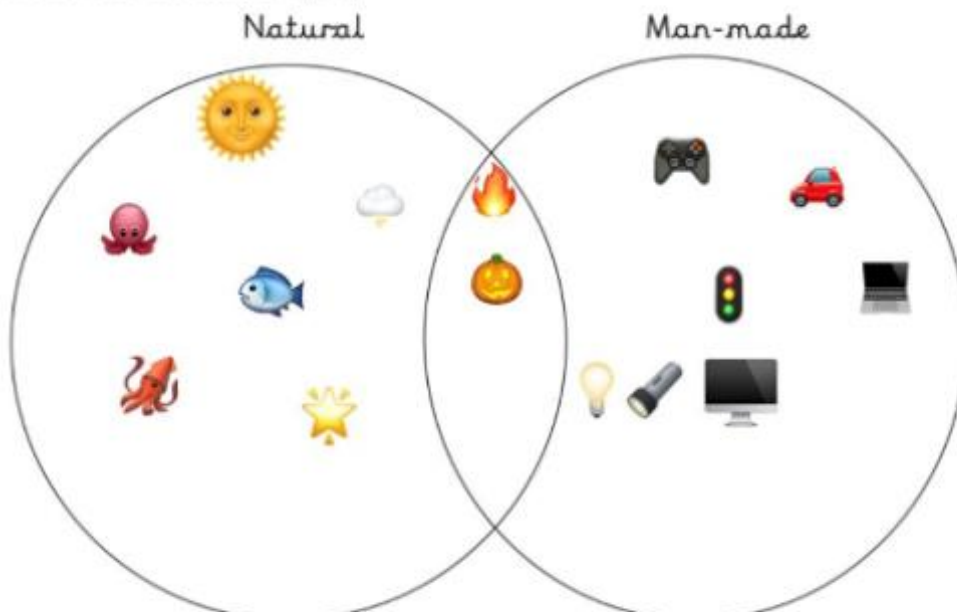
6) What does the word 'species' mean?

A different type of that living thing.

UKS2 have been completing lots of activities on Seesaw set by their teachers.

### Light Sources

Search your house, can you find any natural or man-made light sources? If so add them to the venn diagram.



Extension: Write a sentence to explain on why each item you have put outside the ovale is not a light source.