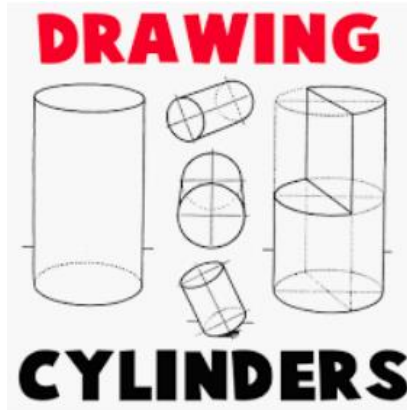
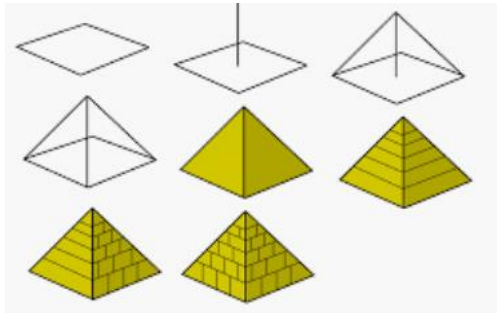


# Year 4 Art Must Knows

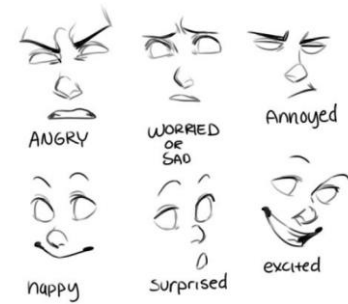


Begin to show facial expressions.

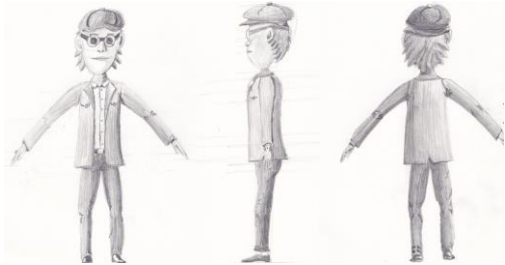
Draw pyramids and cylinders.



## Expressions



Draw forms from the front, side and back.



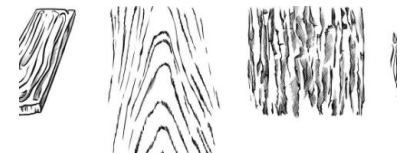
Include shadows in landscapes.



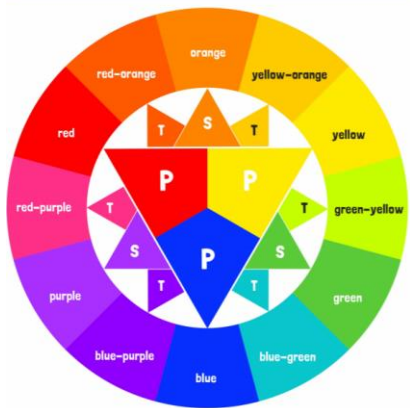
Begin to use perspective and a vanishing point.



Create texture using different pencil strokes.



## Colour Wheel!



Primary Secondary Tertiary

Warm



Cool

Tint- colour and white  
 Shade- colour and black  
 Tone- colour and grey