

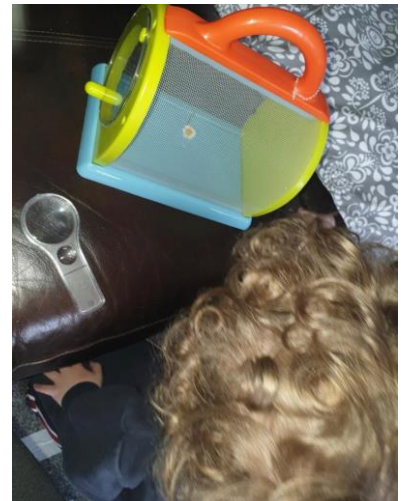
Science Home Learning

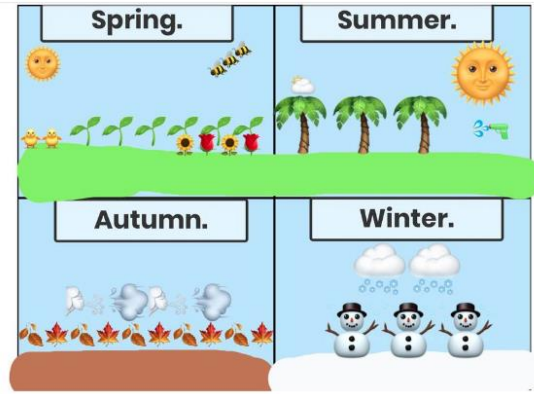
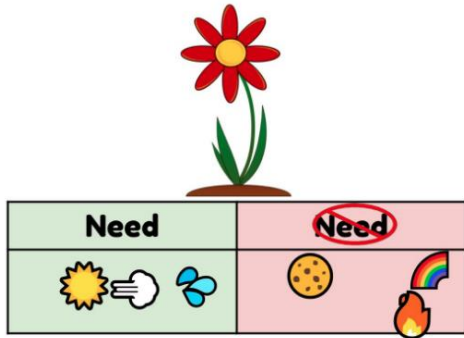


Dean Field set a variety of home learning tasks to support all areas of the curriculum. During the lockdown we were able to continue to do this via Seesaw communication and task setting and by sending out and delivering paper work packs. We also shared any other home learning ideas sent in from our children and parents via our weekly video or newsletter to encourage fun and engaging ways to continue learning Science at home. Here is a selection from Nursery - Year 6 of how we support Science at home as well as in school.

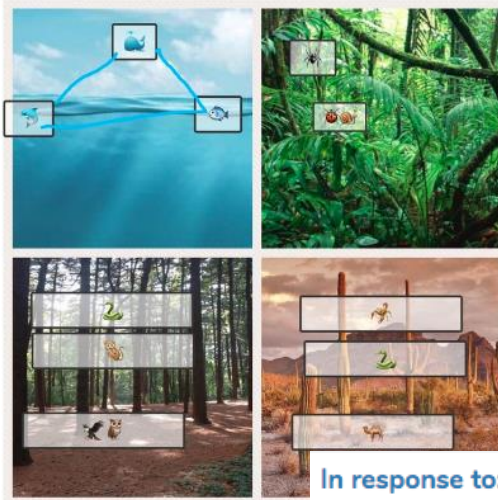


EYFS have been very busy sharing science experiments, finding bugs in their habitats and finding plants in their gardens.

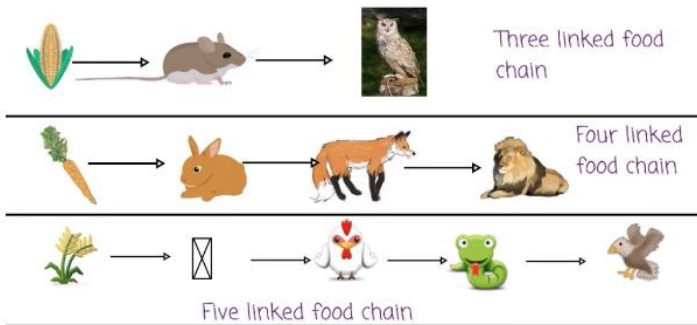




KSI have been completing lots of activities on Seesaw set by their teachers.



In response to: Identifying Habitats



Use these items

Gone Astray Activity Sheet EducationCity

Name: _____ Class: _____

Draw arrows to connect the creatures to their habitats. One has been done for you.

crab	dolphin	bullfinch	cod	fox

sea

garden

pond

hedge and woodland

butterfly	common frog	earthworm	water shrew	squirrel

Circle the words below that could be habitats. One has been done for you.

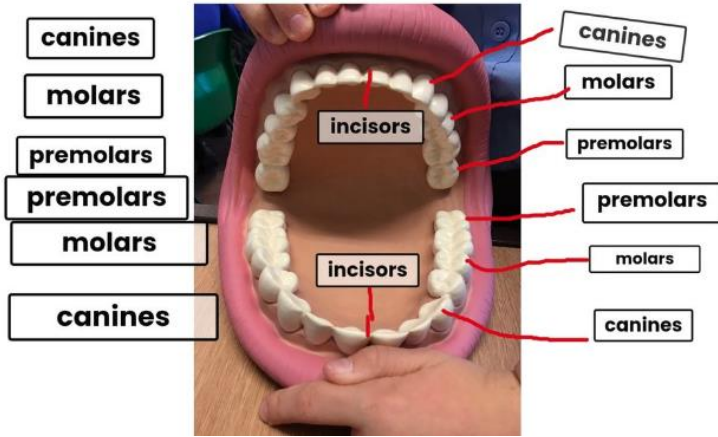
garden shoe beach balloon

cupboard deep ocean marsh

soil television hedgerow river tree

© EducationCity

In response to: Labelling Teeth



In response to: Science - The Digestive System

Your Digestive System

Have you ever wondered what happens to your food after you've chewed it in your mouth? Your body is amazing and has a system that sorts and uses the food you eat to make sure your body has everything it needs to work properly. This is called your digestive system. Here's how it works...

Before the Stomach
First of all, we all know that you put food in your mouth to eat it. You enjoy the taste and the feel of the food in your mouth whilst your teeth break it down into smaller pieces. Saliva is the juice in your mouth that is mixed with your food to help make it softer.
When food is small and soft enough to be swallowed, it goes down a big tube to your stomach called the oesophagus (say: a-soff-a-guss). Muscles in the oesophagus take turns to move the food to your stomach. These muscles are so good at this job that they could even get the food to your stomach if you were standing on your head! (Don't try to eat your tea standing on your head though!)

Fact File
• An adult eats about 500kg of food per year.

LKS2 have been completing lots of activities on Seesaw set by their teachers including comprehensions and books set on accelerated reader.

The Water Cycle at Work
by Rebecca Olsen

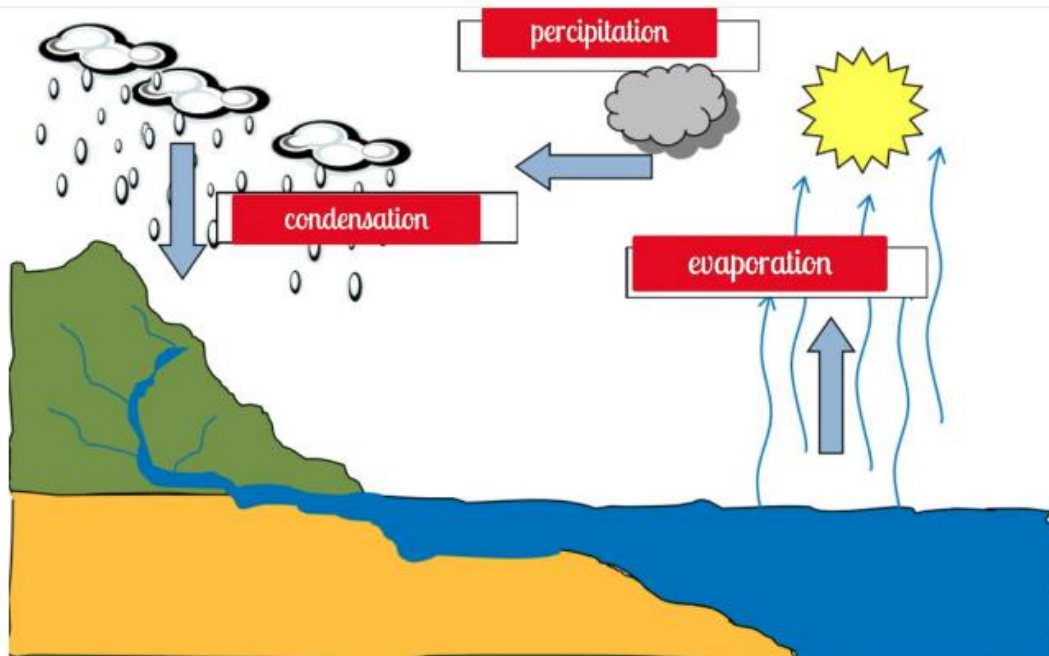
You passed this quiz.
5 of 5 correct

% Correct	Points	Words Read
100	0.5	483

Print TOPS Report

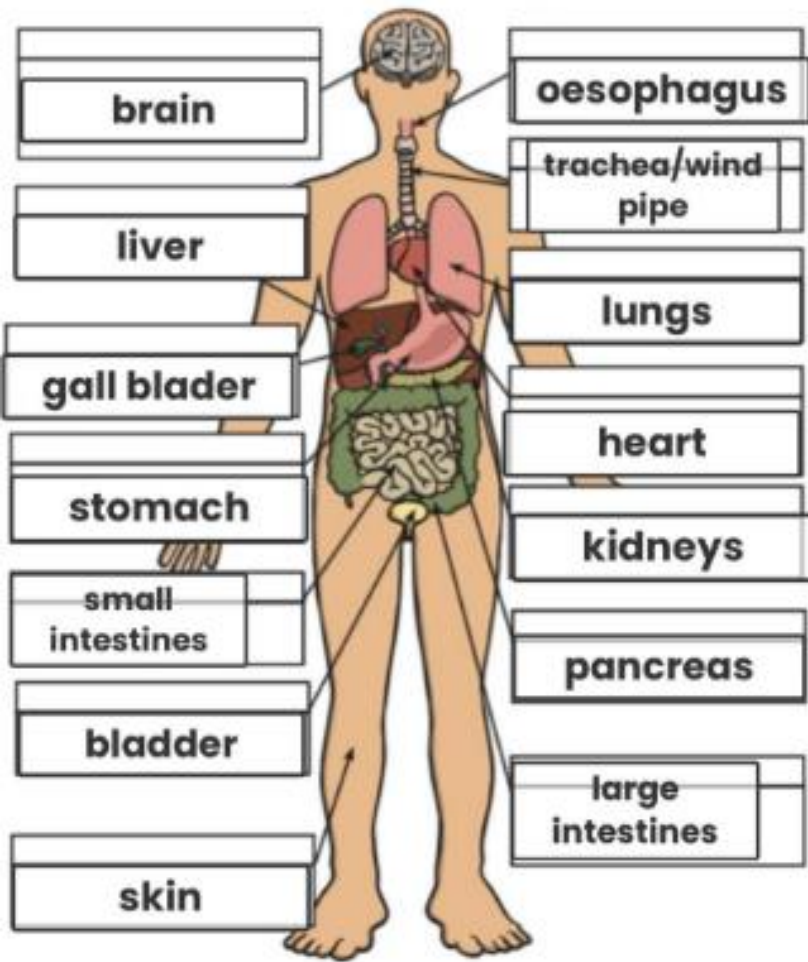
Next

In response to: The Water Cycle



Evolution Reading Comprehension

Cut out the organ names and descriptions and stick them down in the correct boxes on the diagram.



Sheet A

1) When was Charles Darwin born?

1809

2) What does the word 'naturalist' mean?
Someone who studies animals and plants.

3) What was Darwin interested in?
Samples of animals, plants and rocks.

4) What was the name of the ship that Darwin travelled on?

The Beagle.

5) What does the word 'specimen' mean?

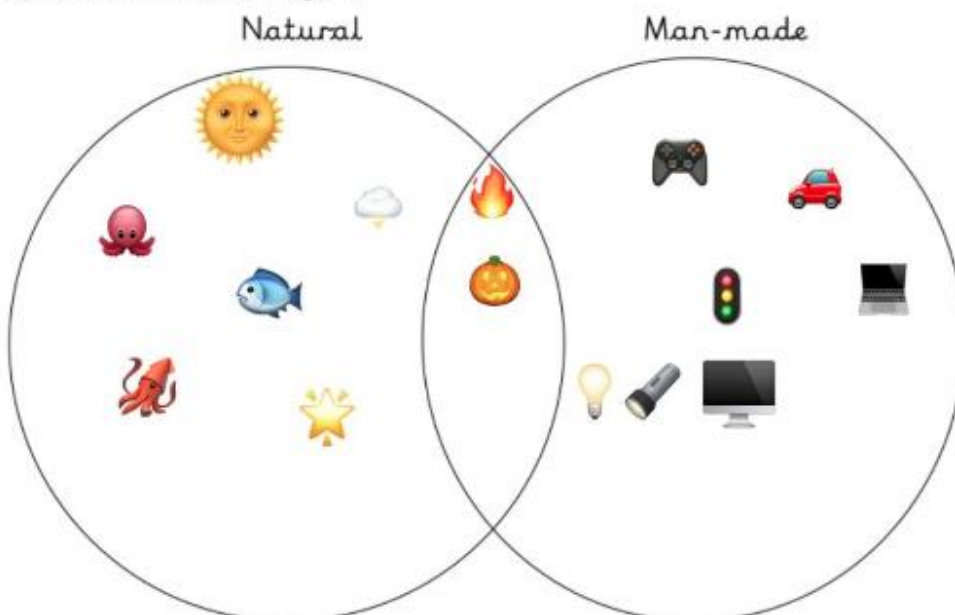
A Sample

6) What does the word 'species' mean?
A different type of that living thing.

UKS2 have been completing lots of activities on saw set by ir teachers.

Light Sources

Search your house, can you find any natural or man-made light sources? If so add them to the venn diagram.



Extension: Write a sentence to explain on why each item you have put outside the ovals is not a light source.