

# Year 4 Music Must Knows



## Interrelated Dimensions of Music

**Pulse-** The steady beat of the music.



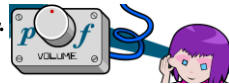
**Rhythm-** Patterns of long and short sounds.



**Tempo-** How fast or slow the music goes.



**Dynamics-** How loud or quiet the music is.



**Pitch-** How high or low sounds are.



**Texture-** How thick or thin the music is.  
How many layers of sound the music has.



**Timbre-** The character of a sound.



**Structure-** The parts of the music, how it is put together. For example, does it have a chorus/verses?

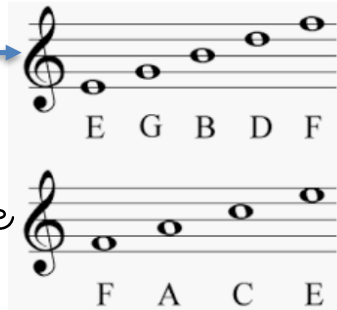


## Treble Clef

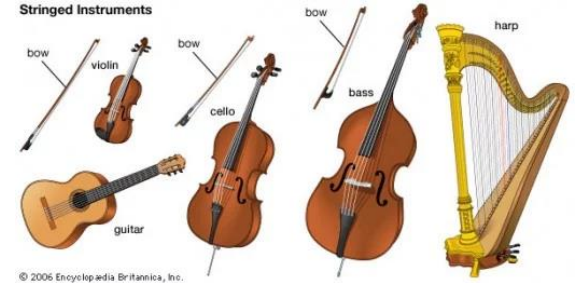
To begin to recognise different notes on the staff.

To know the higher the note is, the higher the pitch.

Stave



Begin to recognise the timbre of different instruments.



Note	Name	Length	Rest
	Semibreve	4 beats	
	Minim	2 beats	
	Crotchet	1 beat	
	Quaver	1/2 beat	