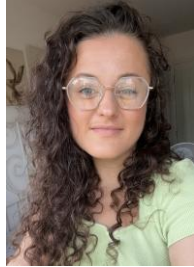


SEND Newsletter – Spring 1 2026

Hello everyone, I hope you had a lovely Christmas!

Reminder that general education queries or questions should first be directed to your child's class teacher who should be able to help. If directly SEND related, I can be reached on Seesaw or call the school office to pass a message on. I have teaching commitments Monday through to Wednesday lunchtime – so any SEND related emails or parent messages won't be able to be answered at this time.



Miss Clay
SENCO

Please click on the link below to find out more about the amount of support available to children, young people and their families with special educational needs and/or disabilities in Calderdale.

<https://new.calderdale.gov.uk/schools-and-learning/local-offer-send>



Calderdale's Family Hub and Start for Life Services focus on bringing services together to improve access, improve connections between families, professionals, services and providers, and put relationships at the heart of family support.

There are five Family Hub areas in Calderdale which join up locally in the planning and delivery of family services from conception to young people up to 19 years or up to 25 years for those with special educational needs and disabilities (SEND).

To find out where your nearest Family Hub is, please click on the link [Family Hubs Calderdale](#)

Kooth are commissioned by Calderdale Cares ICB to provide on-line support including counselling, resources, moderated forums and discussion groups. The service is anonymous and confidential and can be used 7 days per week up to 10pm at night from any device.

[Kooth - Find out more here](#)

